



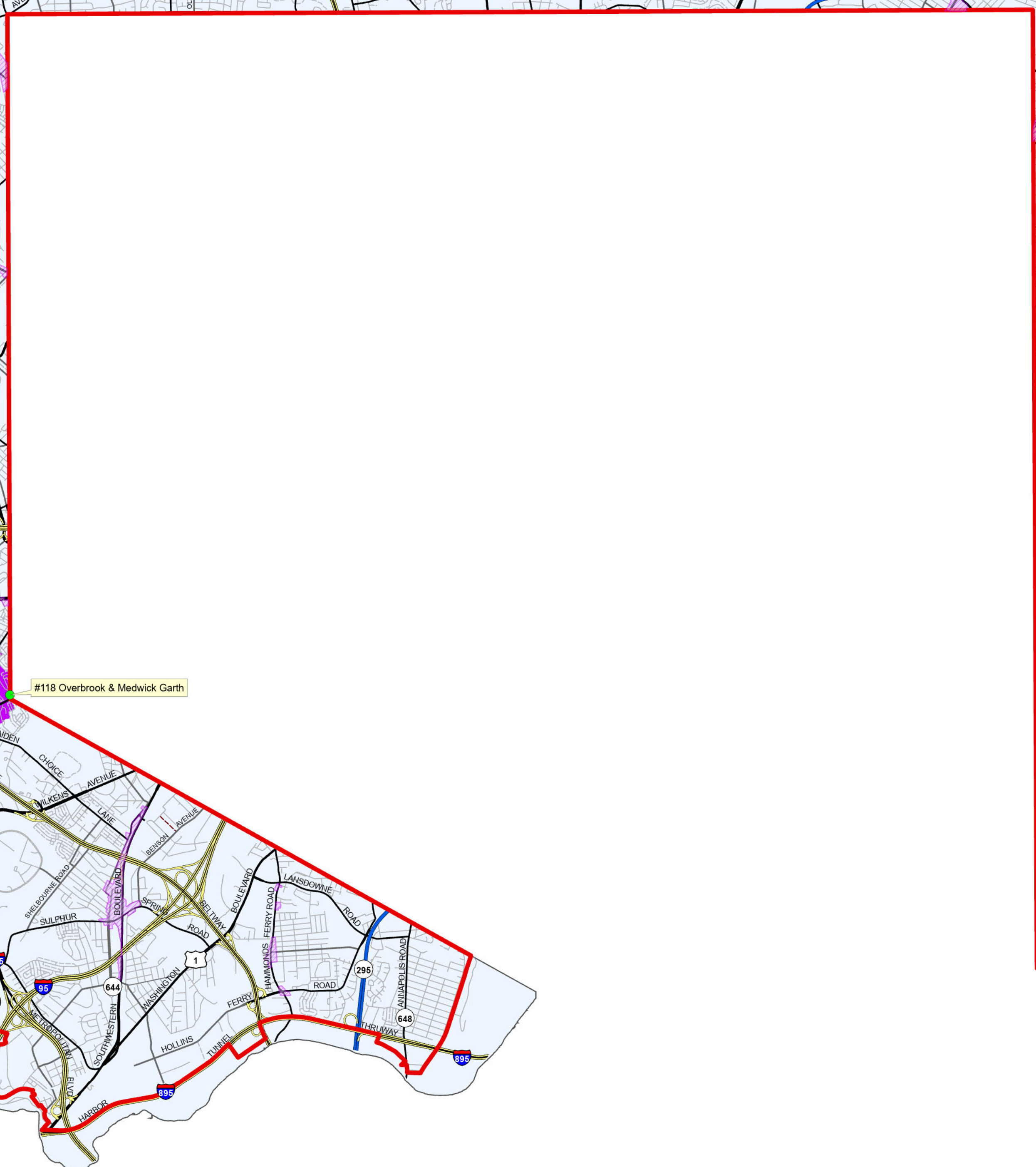
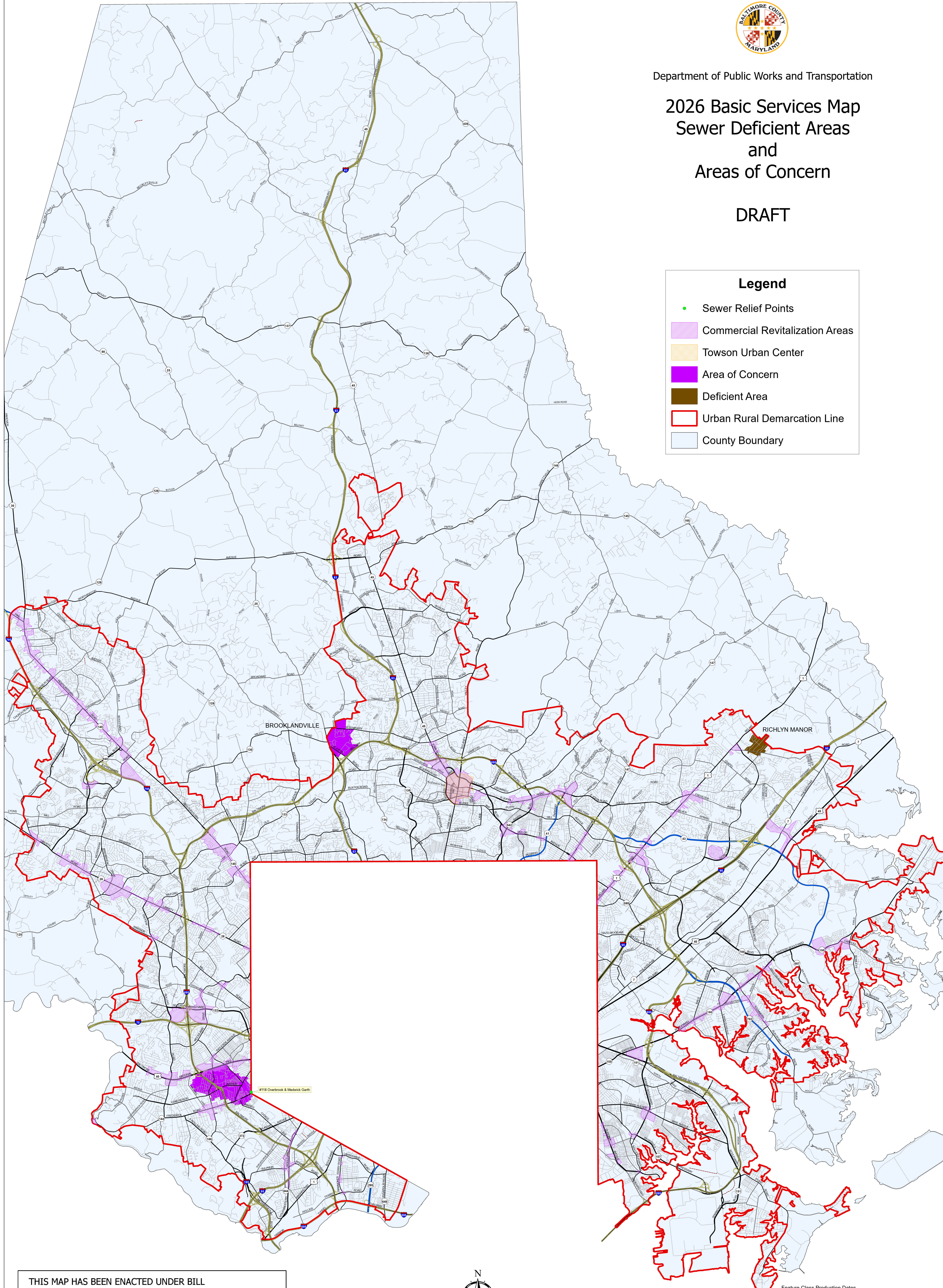
Department of Public Works and Transportation

2026 Basic Services Map Sewer Deficient Areas and Areas of Concern

DRAFT

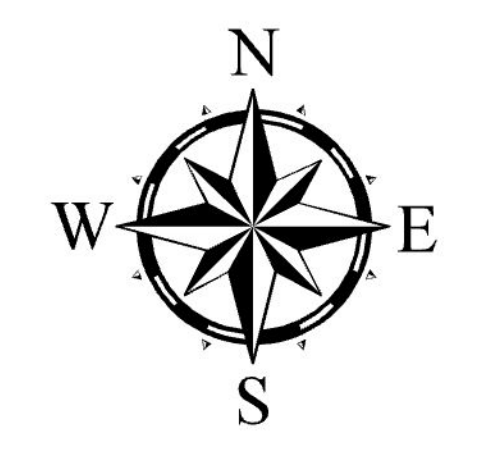
Legend

- Sewer Relief Points
- Commercial Revitalization Areas
- Towson Urban Center
- Area of Concern
- Deficient Area
- Urban Rural Demarcation Line
- County Boundary



THIS MAP HAS BEEN ENACTED UNDER BILL NUMBER _____ AND IS PART OF THE BALTIMORE COUNTY ZONING REGULATIONS, 1955, AS AMENDED BY THE BILL ADOPTED _____ EFFECTIVE _____

COUNTY COUNCIL OF BALTIMORE COUNTY



SCALE 1 INCH = 4,000 Feet



NOTE: The interpretation of the Basic Services Maps are subject to exceptions provided for in the Baltimore County Zoning Regulations, Article 4A Growth Management, Section 4A02 Basic Services Maps. These exceptions include those mapped in the County's geographic information system (GIS); the Urban and Rural Demarcation Line (URDL), Commercial Revitalization Districts (4A02.4 E.1.), and the Towson Urban Center (4A02.4 E.1.). The Towson Urban Center (Downtown Towson District) exists in the Master Plan 2020 in the Land Management Areas feature class.

Feature Class Production Dates	
Sewer Relief Points	2026
Sewer Areas	2026
Commercial Revitalization Districts	2025
Towson Urban Center	2011
Urban Rural Demarcation Line	2012
Roads	2026
County Boundary	2008

Produced by Baltimore County Department of Public Works and Transportation
North American Datum 1983 HARN, U.S. Survey Foot
Published January 8, 2026